

Supplementary Material

	All N=7563	≤40 years at MS clinical onset N=5538	>40 years at MS clinical onset N=2025
Age at MS onset (years)^a			
[25; 30]	2444 (32.3%)	2444 (56.5%)	0 (0%)
[31; 40]	3094 (40.9%)	3094 (71.6%)	0 (0%)
[41; 50]	1610 (21.3%)	0 (0%)	1610 (116.7%)
[51; max=80]	415 (5.5%)	0 (0%)	415 (30.1%)
MS clinical onset period^a			
[1996-1999]	1339 (17.7%)	1033 (23.9%)	306 (22.2%)
[2000-2004]	1880 (24.9%)	1429 (33.1%)	451 (32.7%)
[2005-2009]	2171 (28.7%)	1576 (36.5%)	595 (43.1%)
[2010-2014]	2173 (28.7%)	1500 (34.7%)	673 (48.8%)
Education level^a			
Low	643 (8.5%)	352 (8.1%)	291 (21.1%)
Medium	3492 (46.2%)	2462 (57%)	1030 (74.6%)
High	2329 (30.8%)	1829 (42.3%)	500 (36.2%)
Very high	1099 (14.5%)	895 (20.7%)	204 (14.8%)

^a N (%)

eTable 1: Baseline characteristics of patients with Relapsing onset Multiple Sclerosis (MS) between 1996 and 2014 according to age at MS clinical onset.

	All N=5703	≤40 years at MS clinical onset N=4323	>40 years at MS clinical onset N=1380
MS clinical onset period^a			
[1996-1999]	979 (17.2%)	789 (18.3%)	190 (13.8%)
[2000-2004]	1490 (26.1%)	1152 (26.6%)	308 (22.3%)
[2005-2009]	1734 (30.4%)	1283 (29.7%)	451 (32.7%)
[2010-2014]	1530 (26.8%)	1099 (25.4%)	431 (31.2%)
Age at platform therapy start (years)^a			
≤40	3385 (59.4%)	3385 (78.3%)	0 (0%)
>40	2318 (40.6%)	938 (21.7%)	1380 (100%)
MS duration at platform therapy start (years)^a			
One year	2026 (35.5%)	1521 (35.2%)	505 (36.6%)
Two years	1065 (18.7%)	784 (18.1%)	281 (20.4%)
More than two	2612 (45.8%)	2018 (46.7%)	594 (43%)
EDSS at platform therapy start (years)^a			
[0;3.5]	3005 (52.7%)	2338 (54.1%)	667 (48.3%)
[4.0; 10.0]	337 (5.9%)	202 (4.7%)	135 (9.8%)
Missing	2361 (41.4%)	1783 (41.2%)	578 (41.9%)
Number of relapses before treatment start^a			
None	1025 (18%)	736 (17%)	289 (20.9%)
One	3002 (52.6%)	2277 (52.7%)	725 (52.5%)
Two	1323 (23.2%)	1020 (23.6%)	303 (22%)
Three or more	353 (6.2%)	290 (6.7%)	63 (4.6%)

^a N (%)

EDSS, Expanded Disability Status Scale

eTable 2: Characteristics of patients with Relapsing onset Multiple Sclerosis (MS) who initiated a platform therapy as first treatment between 1996 and 2014, according to age at MS clinical onset.

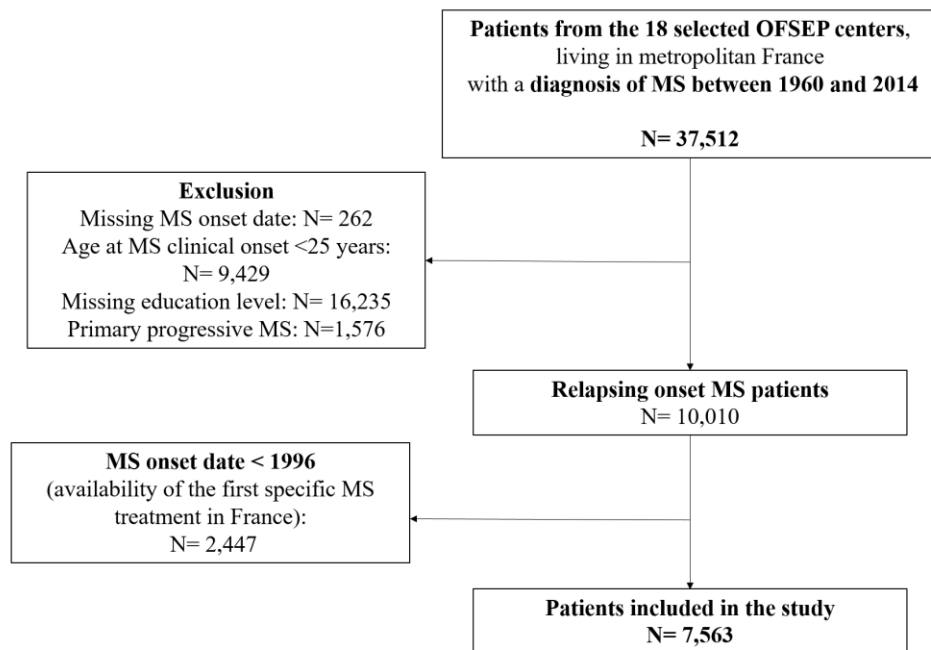
	≤40 years at MS clinical onset					>40 years at MS clinical onset				
	Year 1	Year 2	Year 3	Year 4	Year 5	Year 1	Year 2	Year 3	Year 4	Year 5
	4323	4225	4125	3992	3841	1380	1322	1290	1252	1218
Low ducation level	263	258	253	246	237	190	182	175	171	170
<i>Number of relapses</i>										
No relapse	152 (57.8%)	183 (70.9%)	178 (70.4%)	184 (74.8%)	174 (73.4%)	112 (58.9%)	139 (76.4%)	135 (77.1%)	132 (77.2%)	150 (88.2%)
One relapse	72 (27.4%)	57 (22.1%)	58 (22.9%)	44 (17.9%)	45 (19%)	60 (31.6%)	36 (19.8%)	38 (21.7%)	35 (20.5%)	18 (10.6%)
More than one relapse	39 (14.8%)	18 (7%)	17 (6.7%)	18 (7.3%)	18 (7.6%)	18 (9.5%)	7 (3.8%)	2 (1.1%)	4 (2.3%)	2 (1.2%)
<i>Transition to SPMS</i>	1 (0.4%)	4 (1.5%)	10 (4.0%)	17 (6.9%)	22 (9.3%)	9(4.7%)	15(8.2%)	26(14.8%)	36(21.0%)	41(24.4%)
Medium ducation level										
<i>Number of relapses</i>	1925	1886	1835	1773	1715	723	690	672	655	643
No relapse	1154 (59.9%)	1277 (67.7%)	1327 (72.3%)	1305 (73.6%)	1304 (76%)	476 (65.8%)	510 (73.9%)	503 (74.9%)	515 (78.6%)	527 (82%)
One relapse	507 (26.3%)	449 (23.8%)	376 (20.5%)	374 (21.1%)	336 (19.6%)	185 (25.6%)	140 (20.3%)	138 (20.5%)	120 (18.3%)	97 (15.1%)
More than one relapse	264 (13.7%)	160 (8.5%)	132 (7.2%)	94 (5.3%)	75 (4.4%)	62 (8.6%)	40 (5.8%)	31 (4.6%)	20 (3.1%)	19 (3%)
<i>Transition to SPMS</i>	13(0.7%)	30(1.6%)	53(2.9%)	76(4.3%)	105(6.1%)	17(2.6%)	40(5.8%)	58(8.6%)	77(11.8%)	117(18.2%)
High ducation level										
<i>Number of relapses</i>	1438	1409	1380	1332	1279	340	329	323	310	295
No relapse	866 (60.2%)	984 (69.8%)	1012 (73.3%)	1010 (75.8%)	968 (75.7%)	231 (67.9%)	246 (74.8%)	254 (78.6%)	248 (80%)	246 (83.4%)
One relapse	388 (27%)	314 (22.3%)	279 (20.2%)	252 (18.9%)	239 (18.7%)	77 (22.6%)	65 (19.8%)	54 (16.7%)	46 (14.8%)	42 (14.2%)
More than one relapse	184 (12.8%)	111 (7.9%)	89 (6.4%)	70 (5.3%)	72 (5.6%)	32 (9.4%)	18 (5.5%)	15 (4.6%)	16 (5.2%)	7 (2.4%)
<i>Transition to SPMS</i>	2(0.1%)	7(0.5%)	20(1.5%)	31(2.3%)	51(4.0%)	4(1.2%)	11(3.3%)	24(7.4%)	30(9.7%)	42(14.2%)
Very high ducation level										
<i>Number of relapses</i>	697	672	657	641	610	127	121	120	116	110
No relapse	442 (63.4%)	485 (72.2%)	496 (75.5%)	485 (75.7%)	475 (77.9%)	90 (70.9%)	98 (81%)	101 (84.2%)	94 (81%)	93 (84.5%)
One relapse	177 (25.4%)	144 (21.4%)	130 (19.8%)	132 (20.6%)	110 (18%)	24 (18.9%)	17 (14%)	15 (12.5%)	17 (14.7%)	13 (11.8%)
More than one relapse	78 (11.2%)	43 (6.4%)	31 (4.7%)	24 (3.7%)	25 (4.1%)	13 (10.2%)	6 (5%)	4 (3.3%)	5 (4.3%)	4 (3.6%)
<i>Transition to SPMS</i>	0(0.0%)	1(0.1%)	3(0.5%)	5(0.8%)	9(1.5%)	5(3.9%)	8(6.6%)	11(9.1%)	15(12.9%)	22(20.0%)
P*	<i>0.503</i>	<i>0.448</i>	<i>0.367</i>	<i>0.241</i>	<i>0.268</i>	<i>0.192</i>	<i>0.708</i>	<i>0.075</i>	<i>0.372</i>	<i>0.504</i>

*p value of the Fisher's exact test to compare the number of relapses per year in function of the education level, from MS clinical onset to year 5 of follow-up.

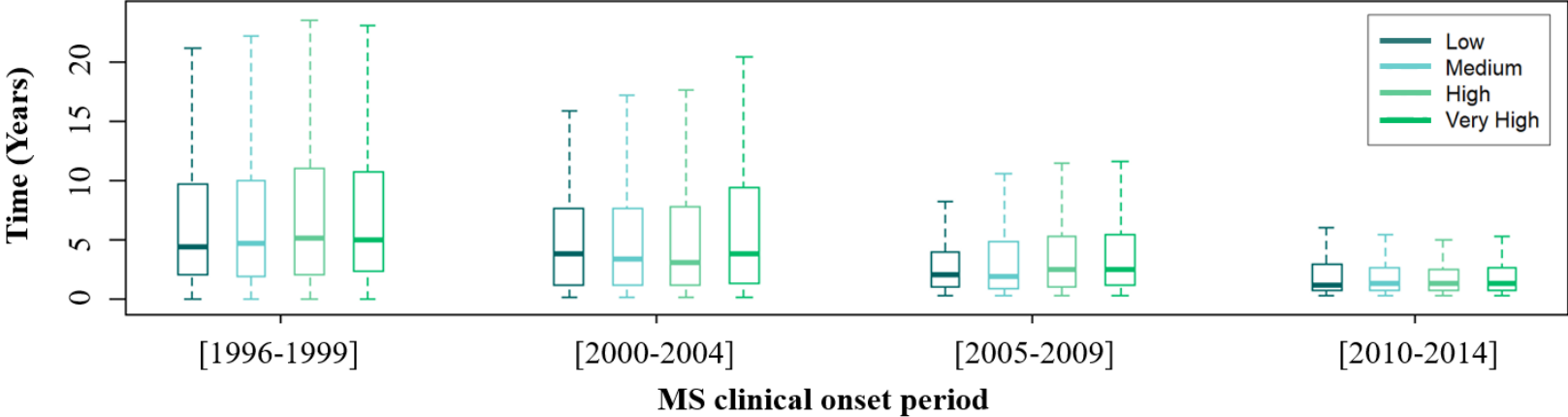
SPMS, secondary progressive multiple sclerosis.

eTable 3: Clinical disease activity (relapses and transition into secondary progressive multiple sclerosis, SPMS) during the 5 years from the first platform therapy in patients with Relapsing onset MS (RMS), according to education level and age at MS clinical onset.

eFigure1: Study flowchart.



eFigure 2: Time from multiple sclerosis (MS) clinical onset to first treatment initiation in function of the MS onset period and education level.



Comparison of time from MS clinical onset to first treatment initiation according to level of education for each MS onset period

$p^*=0.553$

$P^*=0.132$

$p^*=0.003$

$p^*=0.633$

**p value of the Kruskal-Wallis test by period*