



A framework for the implementation of certification procedures in nurse level: a mixed approach study

Israa Salma, Mathias Waelli

► To cite this version:

Israa Salma, Mathias Waelli. A framework for the implementation of certification procedures in nurse level: a mixed approach study. BMC Health Services Research, 2021, 21 (1), 10.1186/s12913-021-06940-0 . hal-03404596

HAL Id: hal-03404596

<https://ehesp.hal.science/hal-03404596>

Submitted on 26 Oct 2021

HAL is a multi-disciplinary open access archive for the deposit and dissemination of scientific research documents, whether they are published or not. The documents may come from teaching and research institutions in France or abroad, or from public or private research centers.

L'archive ouverte pluridisciplinaire **HAL**, est destinée au dépôt et à la diffusion de documents scientifiques de niveau recherche, publiés ou non, émanant des établissements d'enseignement et de recherche français ou étrangers, des laboratoires publics ou privés.

RESEARCH

Open Access



A framework for the implementation of certification procedures in nurse level: a mixed approach study

Israa Salma^{1*} and Mathias Waelli^{2,3}

Abstract

Background: The implementation of certification procedures across healthcare systems is an essential component of the management process. Several promising approaches were developed toward a successful implementation of such policies; however, a precise adaptation and implementation to each local context was essential. Local activities must be considered in order to generate more pragmatic recommendations for managers. In this study, we built a framework for the implementation of certification procedures at nurse activity level. This was developed using two objectives: the identification of key implementation process components, and the integration of these components into a framework which considered the local socio-material context of nurses' work.

Methods: We used a two-step mixed approach. The first was inductive and consisted of a qualitative case study conducted between April and December 2019. Here, we analyzed the implementation of certification procedures in a French teaching hospital. Data were collected using semi-structured interviews and observations. In the second approach, emerging data were deductively analyzed using the Quality Implementation Tool (QIT) and Translational Mobilization Theory (TMT). Analyses were combined to construct an implementation framework.

Results: Sixteen interviews were conducted with participants from different organizational levels, managers, mid-managers, and nurses. Additionally, 83 observational hours were carried out in two different wards. Our results showed that, (1) All retrieved elements during the process were successfully captured by the QIT components, only one component was not applicable. (2) We identified elements related to the local activity context, with the different interrelationships between actors, actions, and contexts using the TMT. (3) Our analyses were integrated and translated into a framework that presents the implementation of certification procedures in healthcare facilities, with a specific interest to the nurse/mid-manager level. By initially using QIT, the framework components took on a transversal aspect which were then adapted by TMT to the local work context.

Conclusions: We successfully generated a framework that supports the implementation of certification procedures at the activity level. Our approach identified a broader vision of the interactions between proximity managers, teams, and contexts during change mobilization, which were not encompassed by transversal framework only, such as QIT. In the future, more empirical studies are needed to test this framework.

Keywords: Implementation, Certification, Local context, Nurse activities, Managers, Framework, Components

* Correspondence: israa.salma@eleve.ehesp.fr

¹École des Hautes Etudes en Santé Publique, 7348 MOS Rennes, EA, France

Full list of author information is available at the end of the article



© The Author(s). 2021 **Open Access** This article is licensed under a Creative Commons Attribution 4.0 International License, which permits use, sharing, adaptation, distribution and reproduction in any medium or format, as long as you give appropriate credit to the original author(s) and the source, provide a link to the Creative Commons licence, and indicate if changes were made. The images or other third party material in this article are included in the article's Creative Commons licence, unless indicated otherwise in a credit line to the material. If material is not included in the article's Creative Commons licence and your intended use is not permitted by statutory regulation or exceeds the permitted use, you will need to obtain permission directly from the copyright holder. To view a copy of this licence, visit <http://creativecommons.org/licenses/by/4.0/>. The Creative Commons Public Domain Dedication waiver (<http://creativecommons.org/publicdomain/zero/1.0/>) applies to the data made available in this article, unless otherwise stated in a credit line to the data.

Background

Healthcare systems are becoming increasingly complex, where individual patients receive care from multiple providers and a multitude of professionals, within a context of reduced and regulated hospitalization procedures [1]. Considerable efforts have been made to improve the care quality and patient safety, as evidenced by the proliferation of checklists, protocols, and attempts to standardize care pathways [2]. Unequivocally, these factors impact professionals' workloads, especially nursing groups [3], who are the largest providers of continuous patient care [4].

Quality measurement and management approaches play significant roles in reform; however, they constitute a timely consideration for healthcare managers and policy makers in terms of their preparation and implementation in professional daily practices [5]. Since 2004, quality certification has been a major external quality evaluation procedure in the French healthcare system [6]. It is iterative and mandatory for all public and private healthcare facilities and is conducted every four or six years [7]. This "peer evaluation technique" is based on the International Organization for Standardization (ISO) [8] which not only considers the quality and safety of care provision, but also continuously enhances an organization's performance and improves patient satisfaction [9]. Certification has gradually evolved from promoting and integrating quality improvement initiatives [6, 10], to measuring implementation metrics in line with increased risk management and patient care [10]. The most recent certification process was synchronized with each establishment procedures, where it was based more on the quality monitoring tool, *Compte Qualité* (CQ), which reflected each institution's commitment to quality and risk management systems and process improvement [10].

Certification evaluation strategies rely on standards and benchmarking and must therefore encompass best clinical practices and care process audits [6], and be well supported by quality and safety indicators (*Indicateur de Qualité et Sécurité des Soins*, IQSS) [11, 12]. Thus, the approach has implemented several care pathways, protocols, and checklist models to manage quality and reduce risk [2]. For example, quality and risk management items include - as outlined in the French National Health Authority (*Haute Autorité de Santé*, HAS) certification manual - a comprehensive criteria list comprising policies governing quality and care safety improvements, professional practice evaluation (*Evaluation des Pratiques Professionnelles*, EPP), document management, and adverse event management [13]. These high governance exigencies are both prominent and essential in high risk sectors to manage risk and control safety in terms of professional practice [14]. However, these requirements

also generate large workloads for nurses [3] and are primarily due to the major roles nurses have in daily practice e.g., implementing and monitoring certification procedures. Nurses are familiar with management, leadership and auditing issues given their academic background [15]. Thus, certification procedures are major strategic and managerial issues for healthcare organizations in terms of preparation, implementation, and day-to-day sustainability [16].

In terms of implementation, the literature offers several promising approaches [17, 18] where key attributes, facilitators, and barriers come together to promote effective implementation strategies [18, 19] of this dynamic process [20]. In 2015, Nilsen et al. generated a differentiating approach incorporating three main aims [18]; a *process model* which described and guided the translation of research into practice [19, 21]; a *determinant framework* which explained and attempted to understand what influenced implementation outcomes [22–24], and *evaluation frameworks* which evaluated implementation efforts [25, 26]. These approaches generally emphasized systematic and cross sectional factors such as leadership, organizational culture, and the availability of time, materials and resources [27]. However, it is also important to define these transversal components at the activity level, to understand how interventions could become embedded into activity systems, and to identify implications for healthcare quality [28]. To this end, several recent studies have stressed the importance of local socio-material infrastructures, their effects on change integration [27], and how they are pivotal in generating quality improvement results [29]. However, there is a dearth of professional frameworks related to nurses' activities in the literature, specifically nursing mandates in terms of essential roles, either directly in patient care and/or indirectly in coordinating activities and organizational care [2], and the plethora of practice requirements which come under quality assurance perspectives.

In this study, we constructed a framework for the implementation of certification procedures at the nurse activity level. This determinant framework seeks to facilitate implementation endeavors by presenting an extended vision from the generic factors impacting an implementation process to local socio-material factors such as local work dynamics. This was based on a mixed approach design covering two main objectives; firstly, we identified and framed key implementation components based on a qualitative study and the incorporation of a practical implementation science tool. Secondly, we integrated these components into a framework which considered specific local socio-material contexts. A socio-material context reflects both socio- and material elements which can be interwoven and constitute the

local context of the activity, in our case nurse activities [27].

Methodology

Study design

This study was conducted based on a mixed two-step approach (Fig. 1). The first inductive step was a qualitative case study which allows researchers to investigate phenomena in natural or 'real life' contexts [30], examine closely how events occur, and understand the implementation of interventions in the healthcare systems [31, 32]. In a second step, the emergent themes were deductively analyzed using two different theoretical approaches; a practical implementation science tool and a middle range theory. This triangulation process between the different approaches provided the basis for a framework. At the final stage, the combination of results led to the construction of framework.

Study location

This study was performed between April and December 2019 in a large teaching hospital (924 beds) in western France. The hospital previously passed four certification processes and was awarded a B rank without recommendations during the last visit. Data were collected from

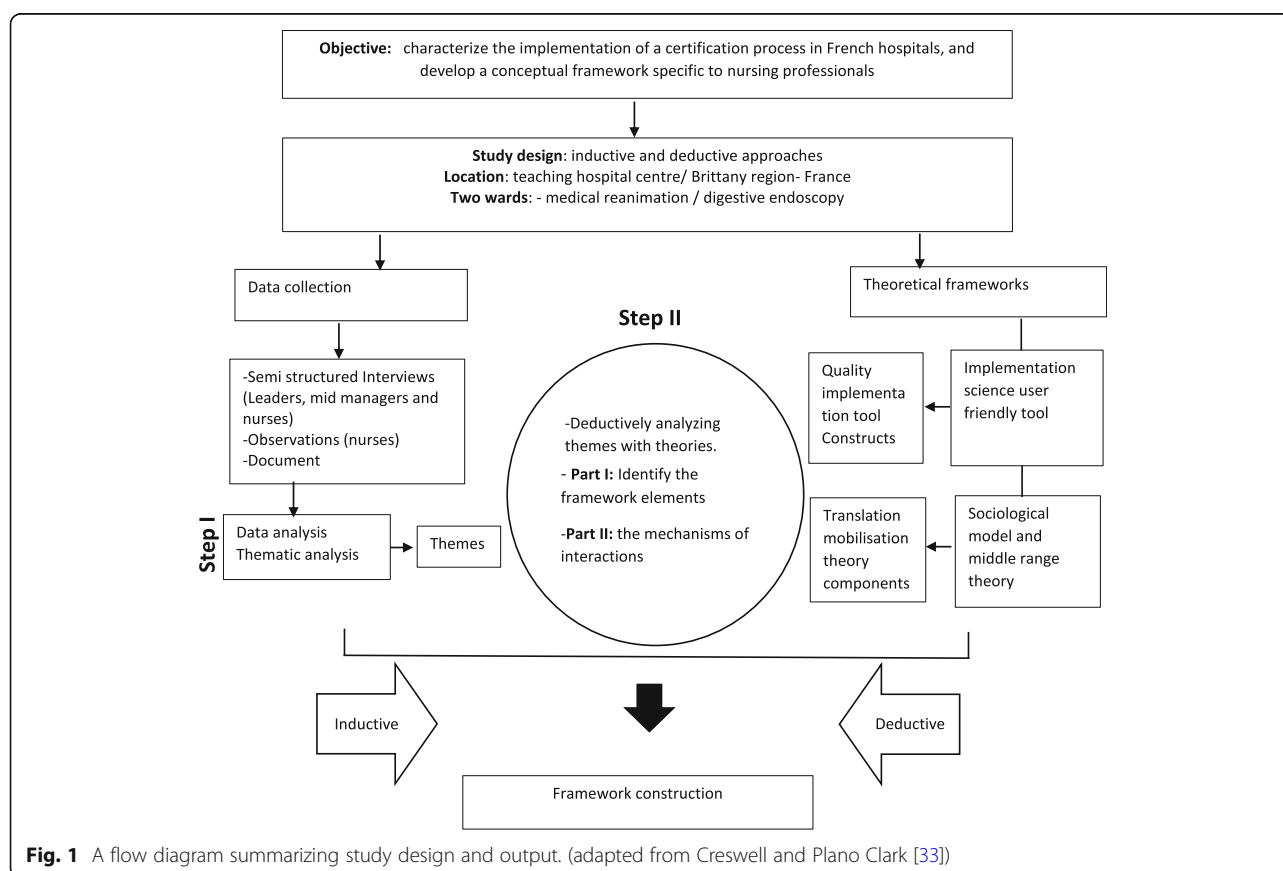
two high risk wards: medical reanimation (Med Rea) and digestive endoscopy (Dig Endo). These wards required a high governance status in terms of patient care and nurse practices as identified in the certification manual. These wards were therefore ideal locations to conduct our study.

The Med Rea ward has a patient/nurse ratio of 5:2. Here, seriously ill patients required respiratory assistance and were dependent on nursing and medical care. Med Rea nurses were qualified to manage and respond to contingencies and unexpected situations. The electronic health record (EHR) system in this ward was partially integrated, therefore a combination of electronic and paper records were used.

The Dig Endo ward functioned under a predefined intervention schedule; on average it experienced eight programmed interventions/day/room over a 10 h shift, five days/week. The area was highly technical, with a high patient rotation and an integrated EHR system.

Data collection

Data came from semi-structured interviews and observations and were supported by documents relevant to certification procedures.



Interviews

Interviews were conducted with actors from different hierarchical levels involved in the implementation of certification procedures, e.g., leader, mid-manager, and nurse levels. This strategy provides an in-depth insight into their experiences, perspectives, and roles. It also captures the issue from multiple lenses allowing a better understanding multiple facets for certification procedures implementation processes [34]. Sampling of interviews was performed based on a data-saturation approach, which means that the interviews' output reached a sense of closure because the new interviews yielded non-essential information in terms of study aims [35]. The semi-structured interviews were conducted by the principle investigator (PI) only. The interview guide was covering the following topics: quality approaches in the hospital, certification procedures and implementation processes for certification procedures, key factors, barriers and facilitators and their impact on nurse activities.

After the initial e-mail contact and the obtainment of written informed consents to participate provided by the participants, the primary phase interviews commenced with nursing leaders and managers. Nurse interviews were conducted during the observations on wards. Nurses with at least one year of work experience and having the French national diploma in nursing science were selected as basic qualification levels, to avoid knowledge or experience bias in the sector. Nurse demographic characteristics are shown (Table 1). All interviews were recorded and transcribed.

In total, 16 semi-structured interviews were conducted with participants from different organizational levels. To ensure participant anonymity, interviews were sequentially numbered as they occurred using an acronym based on roles in the implementation process; TL; top leader, MM; mid-manager, and RN; registered nurse.

Table 1 Participant demographics (for the eight participating nurses)

| Participant demographics | | Med Rea | Dig Endo |
|----------------------------|-----------------|---------|----------|
| Age (years) | 30–45 | 4 | 2 |
| | > 45 | 0 | 2 |
| Gender | female | 4 | 3 |
| | male | 0 | 1 |
| Work experience (years) | < 10 | 0 | 2 |
| | > 10 | 4 | 2 |
| Experience in ward (years) | 1–5 | 2 | 2 |
| | > 5 | 2 | 2 |
| Education | RN ^a | 3 | 4 |
| | HD ^b | 1 | 0 |

^aRN Registered Nurse; ^bHD Higher Diploma (master degree or higher)

Observations

In both wards, observations were carried out by the PI. The observations can be helpful in documenting current processes [36] as well as assessing local contexts and observing the nature and intensity of how interventions are being implemented [37]. Before commencement, the PI was introduced to staff to reiterate research objectives. This ensured that the PI was accepted in both teams and was not a stressor for shadowed staff. Staff were therefore comfortable with their actions, facilitating “real-life” observations of daily workflows. Observations were conducted over different days, ensuring at least one full shift in each ward was conducted. To each nurse, the PI explained the purpose of the observations, which was to identify and not judge their daily practices. In France and across the nursing profession, trainees typically shadow nurses, therefore the PI directly integrated into the staff dynamic. This factor with the observation duration limited the “Hawthorne effect” or observation bias [38]. As a registered nurse, the PI comprehended the different actions and became familiar with the work environment. To prevent over familiarity and retain a critical distance, only descriptive non-judgmental notes were taken [39].

Document collection

Various documents were collected from both wards, e.g., patient file documentation, traceability records such as checklists, blood transfusion follow-up, hemodialysis follow-up, working procedures and policies, and “Bord” table as indicators for staff performance. The PI was also introduced to the hospital informatics system (Dx Care) and was permitted to review electronic forms. During observations period, the PI also attended staff and quality meetings.

Research ethics

In France, research involving human in three types of study: interventional studies, studies with minimal risk and intervention, and non-interventional studies (in the usual framework of patient), requires an ethical approval from an ethical committee, the “Jarde law” L1121-1 PHC (LOI n° 2012 – 300 du 5 mars 2012) [40]. This study involved only professionals and the content of activity, without patient involvement or human experiments, it does not require an IRB clearance in the way it is understood in the United States [41, 42]. It requires only an administrative approval and this was gained through convention before data collection and interviews was signed between the French School of Public Health and the teaching hospital. This convention defined the study duration and the investigations to be carried out.

The study was conducted in accordance with ethics in qualitative research guidelines [43]. A signed consent

form was obtained from interviewees to formalize their willingness to participate. The PI was highly sensitive to confidentiality issues and conducted interviews in private offices in comfortable and informal settings. However, some Med Rea nurse interviews were conducted at nursing stations which facilitated rapid access to critical patients. All interviewees and interview transcripts were anonymized and assigned acronyms.

Data storage

Interview transcripts were stored in two different Excel sheets; one devoted to leaders and managers and one for nurses. Sheets were divided into questions, and each column represented one interviewee. Answers were accorded to the related question, thereby maintaining one concept in each row/column 'case'. All datasets were stored on an encrypted access computer which required a password.

Data analysis

Analyses were conducted by the PI. The first stage involved a rigorous inductive analysis of interview transcripts [44]. Narratives reflecting certification procedures and implementation processes were extracted and organized according to type (e.g., action, interaction, actors, key component facilitators, barriers, context preparedness, and others). These narratives were then used in the second step and deductively analyzed using pre-identified conceptual frameworks [45]; the Quality Implementation Tool (QIT) and the Translational Mobilization Theory (TMT). The interpretation of observations and document reviews were both used as support datasets. In the observations, we followed how certification procedure practices were embedded in the daily practices, and analyzed how they were effectively integrated. In relation to documents, we went through each wards' action plan for certification implementation, reviewed supportive documents such as policies and working procedure, and assessed their usefulness for successful implementation. Each data analysis stage was reviewed and discussed with the second author to ensure analysis credibility (Additional file 3 shows a study checklist using the Consolidated Criteria for Reporting Qualitative Research (COREQ) checklist).

The second analysis stage was two-fold: the first approach investigated the implementation of certification procedures using a generic implementation tool, i.e., QIT. This is a user-friendly pragmatic tool developed based on an exhaustive review of literature summarizing 25 implementation frameworks, regardless of the intervention, environment, or results [19]. The QIT encompasses six major components; (1) develop an implementation team, (2) foster a supportive organizational/climate and conditions, (3) develop an

implementation plan, (4) Receive training and technical assistance, (5) practitioner-expert collaboration, and (6) evaluate the effectiveness of the implementation. These components presented in a tabular format, with each component divided into action steps in each row, and each row divided into three columns. These columns represented three distinct steps over the implementation process, i.e., (i) planning, (ii) real-time monitoring, and (iii) innovation evaluation. QIT was primarily developed to implement innovation with quality [46]. In this study, QIT constructs were used to frame emergent themes from interview transcript analyses. This was conducted by aligning tool components with actions and themes derived from manager and leader interviews (Additional file 1).

This first approach was generic in nature; the QIT allowed the capture of transversal elements involved in the implementation of quality procedures. However, we lacked an integrated approach to these factors in the local socio-material context. The consideration of socio-material contexts allows for a better understanding of interactions between the local context of implementation and the development of various factors [27], e.g., the implementation of informatics tools and leadership depends on local work dynamics. These elements were the core of the second approach, or TMT.

TMT is based on ethnographic research on organizing the work of nurses involved in patient care pathways [47]. Nurses are "obligatory passage points" in hospitals which localize, refract, and shape materials and activities supporting patient care pathways [48]. This systematic framework allows researchers to capture emerging contextually complex procedures during service processes [49]. TMT embraces social, material, and cognitive processes, leading to practice fulfilment. TMT core components comprise: 'project' which is a goal-oriented strategic activity mobilized through 'mechanisms of mobilization' (Table 2), across a 'strategic action field'. This latter term is defined by resources and conditions which enable and shape project mobilization [47, 49]. TMT was previously implemented in several different case studies, healthcare trajectory and multidisciplinary research projects [50, 51]. TMT was also used to analyze the local context of nurse activities and explore the emergence of certification processes which were defined as "collaborative work practices" [28] in daily workflows. In this study TMT components were helpful in capturing local socio-material factors emerging from interviews analyses and observations, e.g., interactions between actors and innovation. As a result, we identified interaction mechanisms within the framework. This was based on triangulation between managers, nurse interviews, and shadowed observations, all of which were aligned to TMT core components (Additional file 2).

Table 2 Mechanisms of Mobilization of TMT[49]

| Mechanisms of Mobilization | Definition |
|----------------------------|--|
| Object formation | "practices that create the objects of knowledge and practice and enroll them into a project" |
| Work articulation | "practices that assemble and align the elements (people, knowledge, materials, technologies, bodies) through which object trajectories are mobilized within projects" |
| Translation | "practices that enable practice objects to be shared and differing viewpoints, local contingencies, and multiple interests to be accommodated in order to enable concerted action" |
| Reflexive monitoring | "practices through which actors evaluate a field of action to generate situational awareness of project trajectories" |
| Sense-making | "practices through which actors interpret, order, construct and account for projects and at the same time produce and reproduce institutions" |

Results

In addition to interviews, 83 observational hours were also conducted over four separate weeks. These were divided as follows; one module in the Med Rea ward over 40 h, and two interventional rooms in the Dig Endo ward over 43 h. All nurses were interviewed and observed on their daily shift. We therefore obtained a comprehensive description of all tasks in a complete working shift in both wards. This allowed the PI to focus on how nurses interacted with tasks related to certification procedures, e.g., patient file documentation, checklists, medication administration, and others.

The following sections outline the data retrieved in this study; part I shows emerging elements from certification implementation using QIT. Part II localizes these components within the activity's context, with different mobilization mechanisms.

Part I

Our results showed that the majority of elements were captured by the QIT components and action steps, further details in (Additional file 1). Results showed that the "implementation team" in charge of certification implementation were well developed and structured, as mentioned by interviewees. The implementation team consisted of a process leader who managed the implementation process at an institutional level. They could be a physician or an MM working with: executive managers, the experts in field such as hygienist for infection control procedures, and professionals (nurse or caregivers), the referents, the quality engineer and a steering committee e.g., the committee for nosocomial infection prevention. All worked in collaboration with the TL.

The second component, "Foster a supportive organizational climate and conditions", identified several key essential elements for the successful implementation at professional level, such as a key actor with a 'referent of action' role. Referents are professionals who assist new implementation processes *"for example there is a nurse referent for hygiene; she disseminates new procedures and best practices to teams"* TL₁. Other elements included the communication of procedural needs and

benefits, and the professional implication of such implementation. These were considered helpful actions in avoiding professional resistance to intended changes. Other actions enhanced accountability by using a quality management system (QMS), conducting a pilot study prior to implementation and effective communications and shared decision-making processes. In addition to the presence of an administrative support for the implemented intervention such as working procedures, protocols etc... either in paper or electronic forms.

The "receive knowledge and/or technical assistance" construct was identified by managers; *"Before implementation we defined what training was needed for professionals and the required technical support..."* MM₁.

Certification implementation occurred according to a program and an action plan defined for each department and ward. This was developed based on national recommendations as identified by the HAS certification manual, and each sectors' CQ. This latter step reflected the identified risks in priori and posteriori for each sector and it was considered a roadmap for risk management. This program defined a set of tasks corresponding to each standard objective over predefined timelines (The Dig Endo action plan) and responded to the "Develop an implementation plan" component.

The fifth component; "Practitioner-developer collaboration" was not applicable to certification implementation procedures, whether there is no innovation developer, and hospitals implemented procedures developed based on the national recommendations. These recommendations are defined in the HAS certification manual and each hospital develop their action plan accordingly to these recommendations. For the "Evaluate the effectiveness of the implementation" component, interviewees identified quantitative and qualitative evaluation strategies which were carried out differently, according to the intended action. It was based on the evaluation leaders of change readjust and adapted intervention to improve implementation effectiveness, *"it was the ability to conduct a pre-test (for the intended change), an auto-evaluation procedure and receiving feedbacks from each sector thereby allowing us to see what we could do to*

improve because the auto-evaluation allowed us to identify missing elements” TL₁.

In addition to these comments, TL also cited major barriers to the implementation of certification in different wards at the hospital, and cited a lack of organizational support, time, information, human resources, a generalized professional resistance, and an overall challenging process.

Part II

This part of the study framed the identified components at the activity level. It entails previous result analyses by explaining the different inter-relationships at the local context.

The HAS identified healthcare system priorities, and each subject under these priorities included a set of standards and indicators [52]. These standards underpinned the quality program of each healthcare facility as well as the policies and objectives of the QMS [41]. Hence, the higher goal of the healthcare system - defined by care quality and patient safety - represented ‘organizing logic’ which determined the scope of possible actions and activities within facilities, and shaped its purpose. The primary mobilization of certification procedures initiated within departments was based on a list of priority actions previously elaborated through the CQ. This occurred via a set of actions steps according to each sector action plan “*we have an action plan and a list of priority actions, and annually, we contact the quality engineer to revise this action plan*” MM₁. Interventions leading to the emergence of certification in the ward were introduced to nurses by mid-managers and/or by the referent, and this process reflected the ‘object formation’ mechanism. Interventions may took the form of new technologies and/or materials supporting practices, or interpretative repertoires such as protocol changes, policies, checklists and/or traceability documents. Through these interventions, nurses translated recommendations and certification criteria or other quality policies into practice. For example, in the Dig Endo ward nurses were using a working protocol to support preparations for the pre- and on-going of new adopted change of intervention. The change leader - who led the implementation at the professional level - disseminated the information on the required changes to nurses, its needs and benefits in terms of patient care. In other words, the message was how change meet the facility’s organizational logic, thereby reflecting a ‘translation mechanism’. This was seen in nurse interviews; they perceived the importance and the need of certification procedures to improve patient care quality “*certification procedures are progress and enhancement tools which improve patient care*” RN₄.

Healthcare systems by their very nature are dynamic with changeable actions; thus, monitoring processes is important, particularly when implementing cross-sector processes or actions. In order to ensure work harmonization between different sectors. For example, in the Dig Endo ward, the implementation of a checklist was intended for ‘with and without’ general anesthesia (GA) units. The checklist was successfully implemented at the ‘with’ GA unit, but it was not successful in the ‘without’ GA unit. According to MM₁, the checklist was developed as a coordination sheet between the doctor and anesthetist; however, in the ‘without’ GA unit, there was no anesthetist, but only a coordination between doctors and nurses which generated a lack of monitoring data. This information was used by the change leader, who worked with other departments on a new checklist applicable to the Dig Endo ward and other interventional wards, such as interventional radiology. Changes were re-implemented and monitored to assess workability and acceptability among nurses. This ‘work articulation’ between multi-levels and sectors was fundamental for the successful integration of implemented checklist. It occurred at team and departmental meetings, alongside the on-going monitoring of integrated changes.

The evaluation of the implementation occurred continuously throughout the process, both formally and informally. This was done to describe the occurrence and positioning of the implemented intervention at the activity’s level, as well as from the organization’s perspective, indicating a ‘reflexive monitoring’ mechanism; “*We have monthly performance tables...we have follow-up indicator tables that we monitor monthly or once every semester or annually, and we also have morbidity rates which are monitored every two months*” MM₂. Whenever there was a drop in indicators or an adverse event, analyses occurred and corrective actions taken. For example “*one day there was a big alert, endoscopes were contaminated and we looked for possible causes. We did not understand because all staff were well trained. After analyzing the situation, we realized instruments were overbooked; nurses and caregivers were under pressure and were reducing decontamination steps for the endoscopes. So we developed organization tables and we make sure doctors organized between them and avoid these overbooking. This information was passed on during our team meeting*” MM₂. Another example from the Med Rea ward involved nurses who were using new intubation systems by tracing extubation rates, and were relaying their negative experiences at meetings. This feedback was considered a primary support in evaluating change feasibility and outcomes for patient care. Thus, nurses and managers were keen to improve, “*we reverted to our action plan and adjusted according to adverse events*” MM₁. The mobilization of intervention at the nurse level also

depended on a ‘sense-making’ mechanism. In the nursing field, nurses are actively engaged with certification procedures, e.g., they are involved in protocol preparation and validation, they provide and share experiences, and they contribute to auditing systems. By involving nurses in the implementation process, actions and/or care processes evolve into their practices, meaning this active engagement is invaluable for a successful change implementation in the activity system. Professional active engagement provides meaning and allows appropriate team-based action mechanisms.

Finally, leaders emphasized the role of MM and their ability to conduct a participative strategy over the implementation process in order reach a successful integration *“an implementation depends on the mid-managers, and what they disseminate between departments. But, each department has its own reality and the ability of each mid-manager to conduct an implementation effectively”* TL₂.

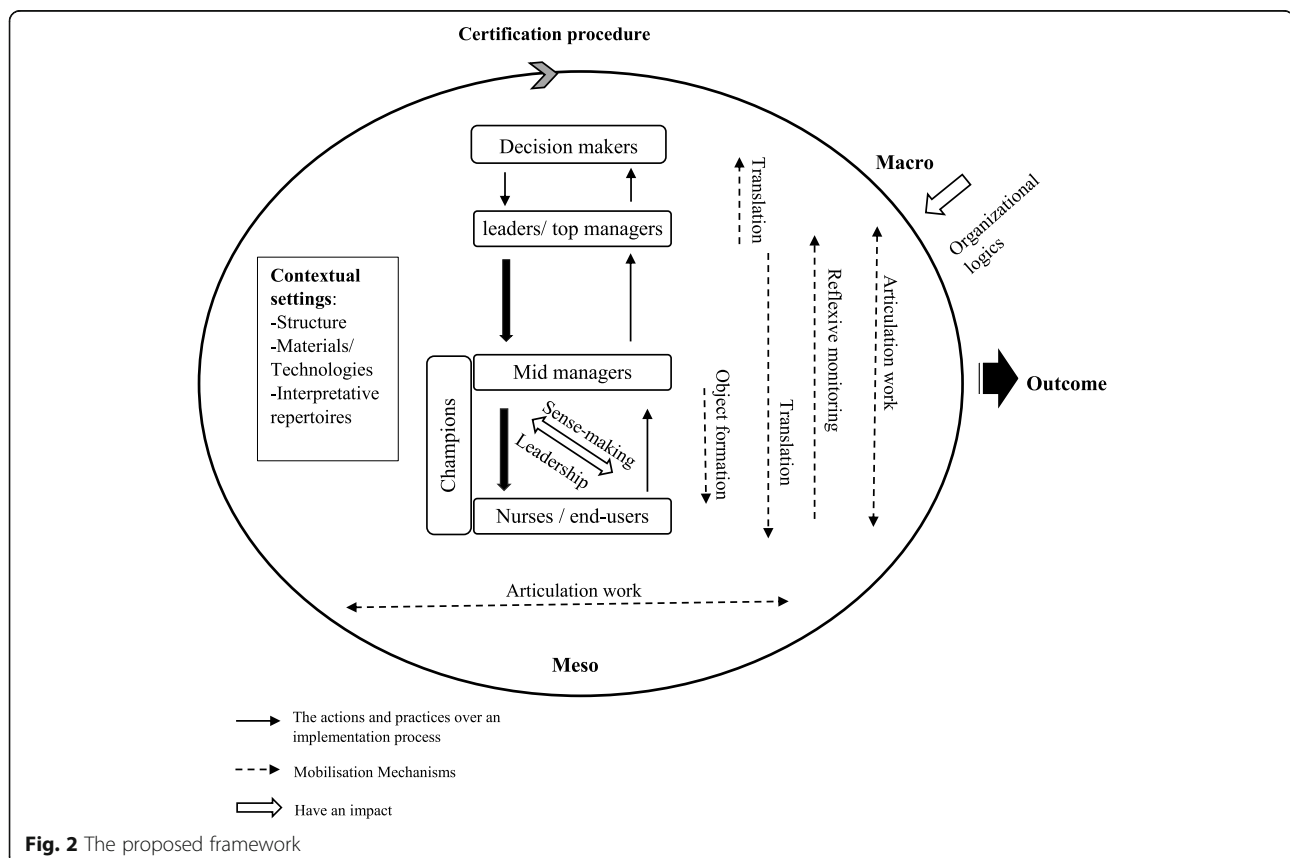
Both parts guided the construction of proposed framework (Fig. 2) by understanding how the implementation process of certification procedures occurs through key elements and mechanisms of mobilization shaping the interrelationships between actions, actors, and the local context.

Our framework (Fig. 2) presents both levels incorporated into the implementation process; Macro and Meso levels. The Macro reflects healthcare systems by the

organizational logics and the Meso reflects the organizational level which comprises the following core components; contextual settings: structure, materials, technologies, and interpretative repertoires. The actors implicated in certification implementation procedures are from different organizational levels. Champions are represented beside mid-managers and nurses levels because they emerge from both levels. The leadership approach and mobilization mechanisms shape interrelationships between the framework components including object formation, translation, work articulation, reflexive monitoring, and sense-making. Solid arrow thickness reflects the importance of the implementation strategy type (top-down or bottom-up). The iterative aspect of certification is represented by the circle shape and the arrow which reflects the continuity of this procedure. Finally, the outcome reflects the quality and safety of care provisions.

Discussion

In this case-study, we expanded the understanding on the quality policy implementation in the activity system by developing an implementation framework for certification procedures in hospitals, at nurse level. The framework was constructed using a two- step mixed approach. In the first stage, the inductive analysis led to the identification of key elements for the certification procedures



implementation. In the second, these elements were analyzed using two theoretical approaches the QIT and the TMT. QIT helps to capture the following framework components. First, the team in charge of certification procedures were characterized by a position and tenure diversity, which is considered essential criteria for a well-balanced and effective implementation team [53]. Although team members were changing depending on the implemented procedure, stability was always maintained in the roles. Second, elements related to a favorable organizational climate conditions, such as contextual settings, knowledge, resources, and material availability are fundamental for certification integration [54, 55]. The administrative supports, such as policies and operational protocols are major facilitators of professional practice, in terms of actions and/or processes [56]. The lack of any of these factors in addition to time, may constitute –according to interviewees– a major constraint hindering implementation of the desired change [57]. Pettigrew et al., presents multiple contextual factors contribute to a strategic change [58]. Typically, a supportive organizational culture and individuals leading the change are locally instrumental for the integration process [59]. In line with this, our study showed that over the certification implementation process at the local level, the ‘referent of action’ played an essential role and it appeared they adopted the champion role. Champions may emerge during an implementation process, sometimes as part of an intervention, sometimes as part of an implementation strategy, and at other times not at all, i.e., they thrive in the implementation environment [60]. They act as mediators between nurses and managers with a capacity to disseminate information and support mobilized actions [61]. These champions – who are sometimes nurses – deployed, followed, monitored, and reflected peer experiences to improve change acceptability and sustainability. Due to their familiarity with the context, they identified the required contextual elements and local context readiness to deploy the desired changes [62]. Thus, champions are key performers in the certification implementation process [63].

Another elements identified at the local level was the leadership approach [64] of proximity managers or the change leader [65]. It allows an active engagement of nurses through a participative strategy used over the implementation processes [66, 67]. In parallel, came the “sense-making” mechanism identified by the TMT. The possibility to experiencing a change feasibility by nurses and providing feedback on its organizational fit support the acceptability of implemented intervention in their practices [68, 69] and avoids resource wastage [70]. Change leaders and nurses must determine the pace and extent of change implementation and its feasibility within their service [71]. A ‘supportive leadership’ approach used by the implementer [71] and a ‘sense-making’ mechanism

both determine how professionals translate change into practice, to meet desired outcomes [49]. Additionally, local managerial support of the implemented intervention was essential [72]. This emerges by communicating the needs and benefits of certification procedures with nurses and decision makers [56, 66] under “translation” mechanisms [48]. Understanding the meaning and importance of change is an important precondition for successful implementation. This comes from the notion that nurses may perceive the implemented intervention as a threat affecting their routines, and thus they resist the change [73]. In addition, the identified actions under the “work articulation” mechanism [49], such as continuous communication between managers, and sectors over the implementation process was essential. It helps settle issues in confrontational situations [56]. These key junctures relied a well on a shared culture and staff learning; they formalizing workflow trajectories and ensuring work harmonization and staff commitment, thus achieving effective implementation [74]. An on-going evaluation all over the implementation process, comes under a “reflexive monitoring mechanisms”, was considered essential element. Champions and nurses feedbacks, as well as, formal evaluation systems such as auditing help monitoring the position of implemented intervention, enhance and adjust the process toward reach the desired outcomes [65, 66].

Our research contributes to and extends understanding and knowledge on “how” and “what” influences the implementation of these quality policies in nurses’ work. The dynamic aspect of contextual factors may impede implementation in one setting and facilitate it in another [75]. Knowing these factors [76] and how they interrelate during an implementation process is essential towards an effective implementation at the activity level [77]. This framework goes beyond the typical perspective of a conventional framework [18] as it considers local context mechanisms which shape and guide an implementation process, this was facilitated using TMT components [49]. The framework shows how key attributes and elements from local contexts interacted via multiple mobilization mechanisms, reflecting the impact of local socio-material contexts [29]. An organization’s life occurs throughout an ‘entanglement’ between the materials and the social context and the way the actor and artefacts ‘entail each other in practice’ [78]. Characterizing and exploring the key elements and the socio-material context of an implementation allows implementers to consider a broader vision on what influences a successful implementation outcome. In line with this, our suggested framework characterizes certification implementation in a hospital. We presented how an implementation context is composed from both social and material elements, which interact together in a continuum rather than in a linear “pipeline” manner [79].

Study limitations

Our study had several limitations. Firstly, in the interview guide, we included no direct questions which developed the different QIT components, but elements were retrieved from interviewee narratives and matched by the different action steps. This may explain the absence of some action steps from the analysis table. Secondly, some data may have been missed from nurse interviews due to extenuating circumstances; nurses had to interrupt interviews to check and respond to patients. This elicited brief responses and may not have adequately reflected their opinion. Thirdly, nurses were not observed and followed over long periods for certification preparation. Observations were conducted to determine the emergence of certification practices in daily workflows, and to investigate work organization and coordination between proximity managers and nurses. Finally, because this was an exploratory study in one setting, our data cannot be extrapolated to all hospital settings.

Conclusions

We propose a framework which analyses and describes the implementation of certification procedures at nurse level. Our observations were generated using two different approaches; practical implementation science using QIT, and the TMT approach which is a sociological model derived from implementation science perspectives. TMT was highly beneficial in understanding the emergence of certification within the local context of nurse activities. It allowed us to identify interactions between nurses, managers, the implemented intervention, and the context. It went beyond the systematic framework, to the actual reality of activity system complexity. In the future, we will test this framework in national and international empirical studies.

Abbreviations

HAS: Haute Autorité de Santé (French National Health Authority); ISO: International Organization for Standardization; IQSS: Indicateur de Qualité et Sécurité des Soins (Healthcare quality indicators); CQ: Compte qualité (quality account monitoring tool); EHR: Electronic Health Record; IDE: Infirmiers Diplômés d'Etat (Registered nurse qualification); QMS: Quality management system; GA: General anesthesia

Supplementary Information

The online version contains supplementary material available at <https://doi.org/10.1186/s12913-021-06940-0>.

Additional file 1: Table analysis using the quality implementation tool (QIT).

Additional file 2: Table analysis using translational mobilization theory (TMT).

Additional file 3: Study reporting using the COREQ checklist.

Acknowledgements

We gratefully acknowledge all study participants who took time to participate in this study. The authors also acknowledge Dr. John P Phelan, and Mrs. Zahraa Sahyoun for editing and proofreading the manuscript.

Authors' contributions

IS and MW conceived the idea. IS, with the help of MW designed the study. IS was principal investigator and performed observations, interviews, analyses, and developed the conceptual framework. IS wrote the first draft and collaborated with MW to generate the final draft. MW verified the analytical methods, proposed corrections, and supervised the overall research. Both authors provided critical feedback and helped shape the research, analyses, and final manuscript. Both approved the final version.

Funding

This study was funded by Bebnine Municipality. The funder had no role in the study - neither in the writing of the manuscript nor in the decision to submit for publication.

Availability of data and materials

Datasets (which include individual transcripts) are not publicly available due to confidentiality policies. However, they may be obtained from the corresponding author upon reasonable request.

Declarations

Authors' information

IS is a doctoral student at the School of Public Health EHESP, Rennes, France. MW is associate professor at MOS-EHESP, Paris/Rennes, France and lecturer at the Global Health Institute, Geneva University, Geneva, Switzerland.

Ethical approval and consent to participate

This study involved professionals and the content of activity, without patient involvement or human experiments. In France, this type of study does not require ethical approval from an ethical committee. The study was conducted in accordance with ethics in qualitative research guidelines. An administrative review and clearance convention was signed between the French School of Public Health and the teaching hospital prior to data collection. This convention defined the study period and the research activities conducted in the hospital, the convention is available under reasonable request. All participants provided oral confirmation and written informed consent before participating.

Consent for publication

This included consent to publish anonymous quotes from individual participants.

Competing interests

The authors declare no competing interests.

Author details

¹École des Hautes Etudes en Santé Publique, 7348 MOS Rennes, EA, France.

²École des Hautes Etudes en Santé Publique, 7348 MOS Paris, EA, France.

³Global Health Institute, Geneva University, Geneva, Switzerland.

Received: 17 November 2020 Accepted: 18 August 2021

Published online: 08 September 2021

References

- Allen D. Inside "bed management": ethnographic insights from the vantage point of UK hospital nurses. *Sociol Health Illn.* 2015; 37:370–84.
- Allen D. Care trajectory management: a conceptual framework for formalizing emergent organization in nursing practice. *J Nurs Manag.* 2019; 27:4–9.
- Mynr D, Van Hecke A, De Bacquer D, Verhaeghe S, Gobert M, Defloor T, et al. Determining a set of measurable and relevant factors affecting nursing workload in the acute care hospital setting: a cross-sectional study. *Int J Nurs Stud.* 2012; 49:427–36.
- Asmirajanti M, Hamid AYS, Hariyati RTS. Nursing care activities based on documentation. *BMC Nurs.* 2019; 18 Suppl 1:32.
- Minvielle E, Kimberly JR. Measuring and Managing Quality in Hospitals: Lessons from a French Experiment. In: T. Savage G, A. Chilingirian J, Powell M, Xiao Q. (Ed.) *International Health Care Management*; 2005, p. 247–72. (Advances in Health Care Management; vol. 5).
- Holcman R. *Accréditation et certification [Accreditation and certification]. Guides Santé Social.* 2015; 2e ed:269–92.

7. Haute Autorité de Santé: Comprendre la certification des établissements de santé [understanding the certification of healthcare establishments]. https://www.has-sante.fr/jcms/c_411173/fr/comprendre-la-certification-des-etablissements-de-sante. 2017. Accessed 6 Mar 2021.
8. Shaw C, Groene O, Mora N, Sunol R. Accreditation and ISO certification: do they explain differences in quality management in European hospitals? *Int J Qual Health Care*. 2010; 22:445–51.
9. Yousefinezhadi T, Mohamadi E, Safari Palangi H, Akbari Sari A. The effect of ISO 9001 and the EFQM model on improving hospital performance: a systematic review. *Iran Red Crescent Med J*. 2015; 17.
10. Haute Autorité de Santé: Historique de la certification [certification history]. https://www.has-sante.fr/jcms/c_978601/fr/historique-de-la-certification. 2017. Accessed 9 Mar 2019.
11. Bertillot H. Des indicateurs pour gouverner la qualité hospitalière. Sociogenèse d'une rationalisation en douceur [Governing Hospital Quality through Indicators: The Sociogenesis of a "Soft Rationalization"]. *Sociologie du travail*. 2016;58:227–52.
12. Haute Autorité de Santé: Comprendre les indicateurs [understanding the indicators]. https://www.has-sante.fr/jcms/r_1456737/fr/comprendre-les-indicateurs. 2020. Accessed 2 Apr 2020.
13. Agence régionale de santé Bretagne: Les procédures certification HAS [the certification procedures of the French national health authority]. <http://www.bretagne.ars.sante.fr/les-procedures-certification-has>. 2018. Accessed 5 Apr 2020.
14. Hesselink G, Berben S, Beune T, Schoonhoven L. Improving the governance of patient safety in emergency care: a systematic review of interventions. *BMJ Open*. 2016; 6:e009837.
15. Manzo BF, Ribeiro HCTC, Brito MJM, Alves M. Nursing in the hospital accreditation process: practice and implications in the work quotidian. *Rev Lat Am Enfermagem*. 2012; 20:151–8.
16. Duval AC. Ancrer le changement: un défi des soignants lors de la démarche de certification, une étude qualitative [Embedding change: a challenge for caregivers during the certification process, a qualitative study]. *Rev Francoph Int de Rech Infir*. 2017; 3:181–8.
17. Wandersman A, Duffy J, Flaspohler P, Noonan R, Lubell K, Stillman L, et al. Bridging the gap between prevention research and practice: the interactive systems framework for dissemination and implementation. *Am J Community Psychol*. 2008; 41:171–81.
18. Nilsen P. Making sense of implementation theories, models and frameworks. *Implement Sci*. 2015;10:53.
19. Meyers DC, Durlak JA, Wandersman A. The quality implementation framework: a synthesis of critical steps in the implementation process. *Am J Community Psychol*. 2012; 50:462–80.
20. Pfadenhauer LM, Gerhardus A, Mozygemba K, Lysdahl KB, Booth A, Hofmann B, et al. Making sense of complexity in context and implementation: the Context and Implementation of Complex Interventions (CICI) framework. *Implementation Science*. 2017; 12:21.
21. Wilson KM, Brady TJ, Lesesne C, NCCDPHP work group on translation. An organizing framework for translation in public health: the Knowledge to Action Framework. *Prev Chronic Dis*. 2011;8:A46.
22. Rycroft-Malone J. The PARIHS framework-a-framework for guiding the implementation of evidence-based practice. *J Nurs Care Qual*. 2004; 19:297–304.
23. Damschroder LJ, Aron DC, Keith RE, Kirsh SR, Alexander JA, Lowery JC. Fostering implementation of health services research findings into practice: a consolidated framework for advancing implementation science. *Implement Sci*. 2009; 4:50.
24. Durlak JA, DuPre EP. Implementation matters: a review of research on the influence of implementation on program outcomes and the factors affecting implementation. *Am J Community Psychol*. 2008; 41:327–50.
25. Glasgow RE, Vogt TM, Boles SM. Evaluating the public health impact of health promotion interventions: the RE-AIM framework. *Am J Public Health*. 1999; 89:1322–7.
26. Dabbagh L, Green LW, Walker GM. Case study: application of precede and proceed as a framework for designing culturally sensitive diarrhea prevention programs and policy in arab countries. *Int Q Community Health Educ*. 1991; 12:293–315.
27. Allen D. Understanding context for quality improvement: artefacts, affordances and socio-material infrastructure. *Health (London)*. 2013; 17: 460–77.
28. Allen D. Analysing healthcare coordination using translational mobilization. *J Health Organ Manag*. 2018; 32:358–73.
29. Waeli M, Gomez M-L, Sicotte C, Zicari A, Bonnefond JY, Lorino P, et al. Keys to successful implementation of a French national quality indicator in health care organizations: a qualitative study. *BMC Health Serv Res*. 2016; 16: 553.
30. Houghton C, Casey D, Shaw D, Murphy K. Rigour in qualitative case-study research. *Nurse Res*. 2013; 20:12–7.
31. Crowe S, Cresswell K, Robertson A, Huby G, Avery A, Sheikh A. The case study approach. *BMC Med Res Methodol*. 2011; 11:100.
32. Hamilton AB, Finley EP. Qualitative methods in implementation research: An introduction. *Psychiat Res*. 2019; 280:112516.
33. Creswell JW, Plano Clark VL. Designing and conducting mixed methods research. Los Angeles: SAGE Publications; 2011.
34. Nyanchoka L, Tudur-Smith C, Porcher R, Hren D. Key stakeholders' perspectives and experiences with defining, identifying and displaying gaps in health research: a qualitative study protocol. *BMJ Open*. 2019; 9.
35. Moser A, Korstjens I. Series: Practical guidance to qualitative research. Part 3: Sampling, data collection and analysis. *Eur J Gen Pract*. 2018; 24:9–18.
36. Nilsson G, Hansson K, Tibergh I, Hallström I. How dislocation and professional anxiety influence readiness for change during the implementation of hospital-based home care for children newly diagnosed with diabetes – an ethnographic analysis of the logic of workplace change. *BMC Health Serv Res*. 2018; 18:61.
37. Palinkas LA, Spear SE, Mendon SJ, Villamar J, Valente T, Chou CP, et al. Measuring sustainment of prevention programs and initiatives: a study protocol. *Implement Sci*. 2016; 11:95.
38. Goodwin MA, Stange KC, Zyzanski SJ, Crabtree BF, Borawski EA, Flocke SA. The Hawthorne effect in direct observation research with physicians and patients. *J of Eval in Clinic Prac*. 2017; 23:1322–8.
39. Hammersley M, Atkinson P. Ethnography principles in practice. London: Tavistock. 2007.
40. Loi Jarde. LOI n° 2012 – 300 du 5 mars 2012 relative aux recherches impliquant la personne humaine [LAW No. 2012 – 300 of 5 March 2012 relating to research involving the human person]. 2016. <https://www.legifrance.gouv.fr/loda/id/JORFTEXT000025441587/>. Accessed 20 Jun 2021.
41. Dariel OP dit, Waeli M, Ricketts TC. France's transition to academic nursing: the theory–practice gap. *J of Nurs Edu and Practice*. 2014; 4:88.
42. Durand-Zaleski IS, Alberti C, Durieux P, Duval X, Gottot S, Ravaut P, et al. Informed consent in clinical research in France: assessment and factors associated with therapeutic misconception. *J of Med Eth*. 2008; 34:e16–e16.
43. DiCicco-Bloom B, Crabtree BF. The qualitative research interview. *Medical Education*. 2006; 40:314–21.
44. Thomas DR. A General Inductive Approach for Analyzing Qualitative Evaluation Data. *American Journal of Evaluation*. 2006; 27:237–46.
45. Elo S, Kyngäs H. The qualitative content analysis process. *Journal of Advanced Nursing*. 2008; 62:107–15.
46. Meyers DC, Katz J, Chien V, Wandersman A, Scaccia JP, Wright A. Practical implementation science: developing and piloting the quality implementation tool. *Am J Community Psychol*. 2012; 50:481–96.
47. Allen D, May C. Organizing Practice and Practicing Organization: An Outline of Translational Mobilisation Theory. *SAGE Open*. 2017; 7:2158244017707993.
48. Davina Allen. Development. Translational Mobilisation Theory. 2018. <https://www.translationalmobilisationtheory.org/development-of-tmt>. Accessed 25 Mar 2020.
49. Davina Allen. Translational Mobilisation Theory: A new paradigm for understanding the organisational elements of nursing work. *Int J Nurs Stud*. 2018; 79:36–42.
50. Davina Allen. Case Study 1. Translational Mobilisation Theory. 2018. <https://www.translationalmobilisationtheory.org/case-study-1>. Accessed 2 Apr 2020.
51. Davina Allen. Case Study 2. Translational Mobilisation Theory. 2018. <https://www.translationalmobilisationtheory.org/case-study-2>. Accessed 2 Apr 2020.
52. Agence régionale de santé Bretagne. la certification des établissements [the certification for establishments. [Brittany regional health agency]]. <https://www.ars.sante.fr/la-certification-des-etablissements>. 2018. Accessed 25 Mar 2020.
53. Implementation teams: A new lever for organizational change - Higgins. *Journal of Organizational Behavior - Wiley Online Library*. 2012. <https://onlinelibrary.wiley.com/doi/full/10.1002/job.1773>. Accessed 12 Apr 2021.
54. Bergs J, Lambrechts F, Simons P, Vlayen A, Marneffe W, Hellings J, et al. Barriers and facilitators related to the implementation of surgical safety checklists: a systematic review of the qualitative evidence. *BMJ Qual Saf*. 2015; 24:776–86.

55. Mohamed SF, Juma P, Asiki G, Kyobutungi C. Facilitators and barriers in the formulation and implementation of tobacco control policies in Kenya: a qualitative study. *BMC Public Health*. 2018; 18 Suppl 1:960.
56. Paina L, Namazzi G, Tetui M, Mayora C, Kananura RM, Kiwanuka SN, et al. Applying the model of diffusion of innovations to understand facilitators for the implementation of maternal and neonatal health programmes in rural Uganda. *Global Health*. 2019; 15:38.
57. Scholtes B, Schröder-Bäck P, MacKay JM, Vincenten J, Förster K, Brand H. Facilitators and barriers for the adoption, implementation and monitoring of child safety interventions: a multinational qualitative analysis. *Inj Prev*. 2017;23(3):197–204.
58. Pettigrew A, Ferlie E, McKee L. Shaping strategic change - The case of the NHS in the 1980s. *Public Money & Manag*. 1992; 12:27–31.
59. Marchionni C, Ritchie J. Organizational factors that support the implementation of a nursing best practice guideline. *J Nurs Manag*. 2008; 16:266–74.
60. Miech EJ, Rattray NA, Flanagan ME, Damschroder L, Schmid AA, Damush TM. Inside help: An integrative review of champions in healthcare-related implementation. *SAGE Open Med*. 2018;6:2050312118773261.
61. Mills WL, Pimentel CB, Snow AL, Allen RS, Wewiorski NJ, Palmer JA, et al. Nursing home staff perceptions of barriers and facilitators to implementing a quality improvement intervention. *J Am Med Dir Assoc*. 2019; 20:810–5.
62. Soo S, Berta W, Baker GR. Role of champions in the implementation of patient safety practice change. *Healthc Q*. 2009;12 Spec No Patient:123–8.
63. Harper MKD, Loper MAC, Louison MLM, Morse JE, Chapel Hill NC. Stage-based implementation of immediate postpartum long acting reversible contraception using a reproductive justice framework. *Am J Obstet Gynecol*. 2020;222 Suppl 4:S893–905.
64. Guerrero EG, Padwa H, Fenwick K, Harris LM, Aarons GA. Identifying and ranking implicit leadership strategies to promote evidence-based practice implementation in addiction health services. *Implement Sci*. 2016; 11:69.
65. Geerlings L, Rankin NM, Shepherd HL, Butow P. Hospital-based interventions: a systematic review of staff-reported barriers and facilitators to implementation processes. *Implementation Sci*. 2018; 13:36.
66. King ES, Moore CJ, Wilson HK, Harden SM, Davis M, Berg AC. Mixed methods evaluation of implementation and outcomes in a community-based cancer prevention intervention. *BMC Public Health*. 2019; 19:1051.
67. van den Oetelaar WFJM, van Stel HF, van Rhenen W, Stellato RK, Grolman W. Balancing nurses' workload in hospital wards: study protocol of developing a method to manage workload. *BMJ Open*. 2016; 6:e012148.
68. Anrys P, Strauven G, Roussel S, Vande Ginste M, De Lepeleire J, Foulon V, et al. Process evaluation of a complex intervention to optimize quality of prescribing in nursing homes (COME-ON study). *Implement Sci*. 2019; 14:104.
69. Gill RK, Ogilvie G, Norman WV, Fitzsimmons B, Maher C, Renner R. Feasibility and Acceptability of a Mobile Technology Intervention to Support Postabortion Care (The FACTS Study Phase II) after surgical abortion: user-centered design. *JMIR Hum Factors*. 2019; 6:e14558.
70. Murphy S, Mc Mullin R, Brennan S, Meehan TC. Exploring implementation of the careful nursing philosophy and professional practice model[®] in hospital-based practice. *J Nurs Manag*. 2018; 26:263–73.
71. Andreasson J, Eriksson A, Delle L. Health care managers' views on and approaches to implementing models for improving care processes. *J Nurs Manag*. 2016; 24:219–27.
72. Deschesnes M, Tessier C, Couturier Y, Martin C. Professional development in the context of healthy schools in Quebec. *Health Promot Int*. 2015; 30:339–49.
73. Kirk. Barriers and facilitators for implementing a new screening tool in an emergency department: A qualitative study applying the Theoretical Domains Framework. 2016. *J of Clin Nurs* - Wiley Online. <https://onlinelibrary.wiley.com/doi/10.1111/jocn.13275>. Accessed 26 Jan 2021.
74. Yagasaki K, Komatsu H. Preconditions for successful guideline implementation: perceptions of oncology nurses. *BMC Nurs*. 2011; 10:23.
75. May CR, Johnson M, Finch T. Implementation, context and complexity. *Implement Sci*. 2016; 11:141.
76. González-María E, Moreno-Casbas MT, Albornos-Muñoz L, Grinspun D. The implementation of best practice guidelines in Spain through the programme of the best practice spotlight organizations[®]. *Enfermería Clínica (English Edition)*. 2020; 30:136–44.
77. May C, Sibley A, Hunt K. The nursing work of hospital-based clinical practice guideline implementation: An explanatory systematic review using Normalisation Process Theory. *Int J of Nurs Stud*. 2014; 51:289–99.
78. Breimaier HE, Halfens RJ, Lohrmann C. Effectiveness of multifaceted and tailored strategies to implement a fall-prevention guideline into acute care nursing practice: a before-and-after, mixed-method study using a participatory action research approach. *BMC Nurs*. 2015;14:18.
79. Melo S, Bishop S. Translating healthcare research evidence into practice: The role of linked boundary objects. *Soc Sc & Med*. 2020;246:112731.

Publisher's Note

Springer Nature remains neutral with regard to jurisdictional claims in published maps and institutional affiliations.

Ready to submit your research? Choose BMC and benefit from:

- fast, convenient online submission
- thorough peer review by experienced researchers in your field
- rapid publication on acceptance
- support for research data, including large and complex data types
- gold Open Access which fosters wider collaboration and increased citations
- maximum visibility for your research: over 100M website views per year

At BMC, research is always in progress.

Learn more biomedcentral.com/submissions

